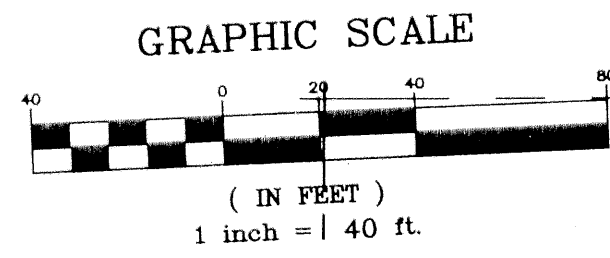


GAETA REPLAT OF LOT 3 OF PORT COMMERCE CENTER III

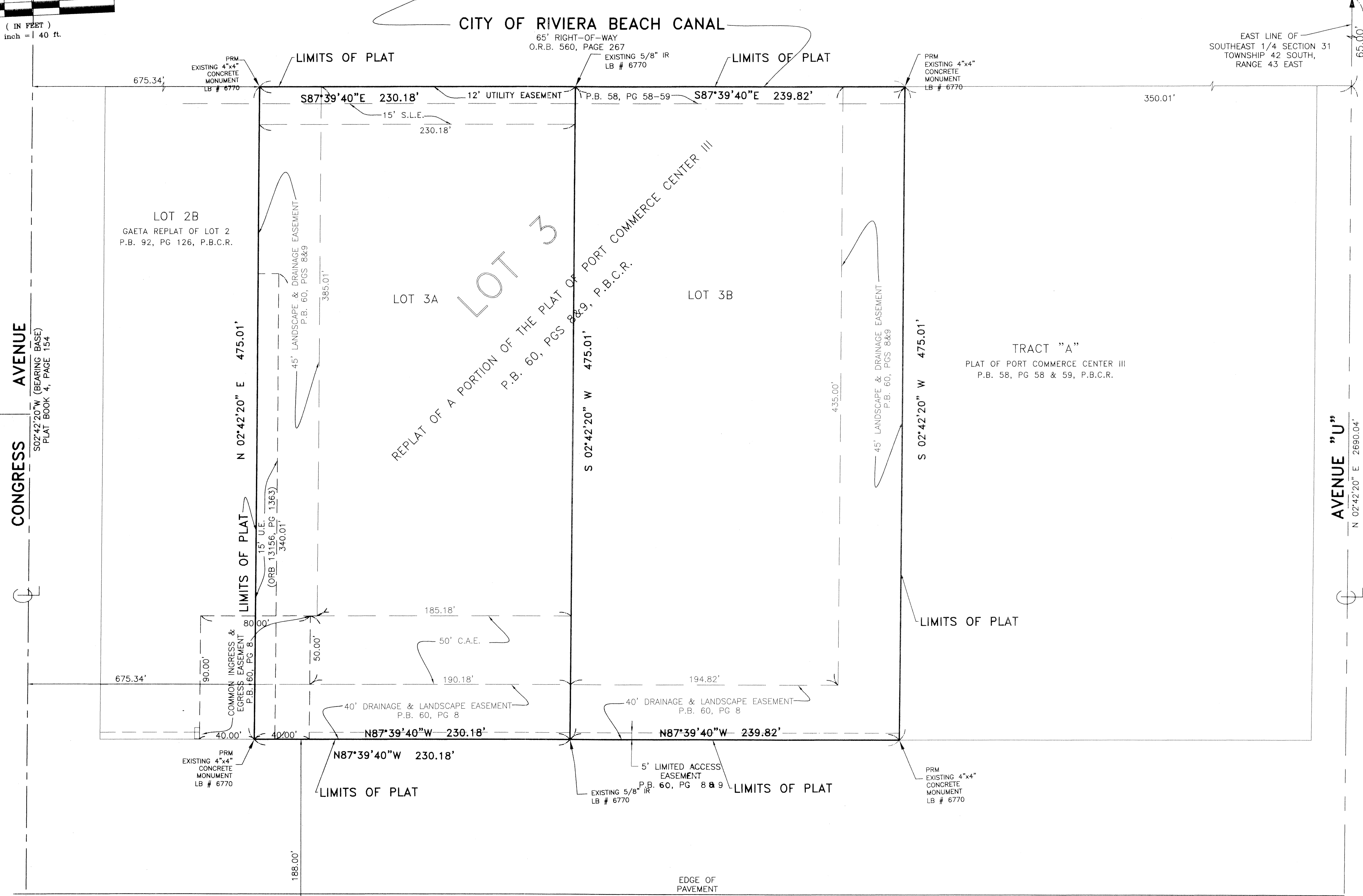
BEING A REPLAT OF LOT 3, "REPLAT OF A PORTION OF THE PLAT OF PORT COMMERCE CENTER III" AS RECORDED IN PLAT BOOK 60, PAGE 8
OF THE PUBLIC RECORDS OF PALM BEACH COUNTY, FLORIDA, SITUATE IN SECTION 31, TOWNSHIP 42 SOUTH, RANGE 43 EAST

CITY OF RIVIERA BEACH, PALM BEACH COUNTY, FLORIDA
JULY, 2002



NORTH LINE OF THE SOUTHEAST 1/4 OF SECTION 31

EXISTING PALM BEACH COUNTY BRASS DISC NE CORNER OF SE QUARTER SECTION 31 TOWNSHIP 42 SOUTH, RANGE 43 EAST



CONGRESS AVENUE
 S02°42'20"W (BEARING BASE)
 PLAT BOOK 4, PAGE 154

AVENUE "U"
 N 02°42'20" E 2890.04'

LEGEND

N.T.S.	NOT TO SCALE
PK	PARKER KALON
MH	MANHOLE
O.R.B.	OFFICIAL RECORD BOOK
PG	PAGE
CM	CONCRETE MONUMENT
PRM	PERMANENT REFERENCE MONUMENT
LB #	LAND SURVEY BUSINESS NUMBER
CL	CENTERLINE
R/W	RIGHT-OF-WAY
O/S	OFFSET
PGS	PAGES
R/W	RIGHT OF WAY
PB	PLAT BOOK
S.L.E.	SANITARY SEWER LINE EASEMENT
C.A.E.	CROSS ACCESS EASEMENT
LB	LAND SURVEY BUSINESS
PRM	PERMANENT REFERENCE MONUMENT
U.E.	UTILITY EASEMENT

S.R. 710
(MARTIN LUTHER KING JR. BLVD. / PORT RD.)

EXISTING PALM BEACH COUNTY BRASS DISC SE CORNER OF SECTION 31, TOWNSHIP 42 SOUTH, RANGE 43 EAST

**GAETA REPLAT OF LOT 3
OF PORT COMMERCE CENTER III**

11911 U.S. HIGHWAY 1, SUITE 120 3050 BISCAYNE BOULEVARD, SUITE 200 4101 N. ANDREWS AVE., SUITE 213
 PALM BEACH GARDENS, FL 33408 WEST PALM BEACH, FL 33411 FORT LAUDERDALE, FL 33309
 TEL: (561) 952-1428 TEL: (561) 949-9990 TEL: (954) 565-9225
 FAX: (561) 952-1428 FAX: (561) 949-9990 FAX: (954) 565-3924
 EMAIL: CNP@CNP.COM

FIELD	PROJ. # 02-024	F.B.	PG.
OFFICE D.R.L.	DATE: 07-08-02	DWG. NO.	SHEET 2 of 2
C'KD:	T.J.B.	REF:	SHEET: 2 of 2